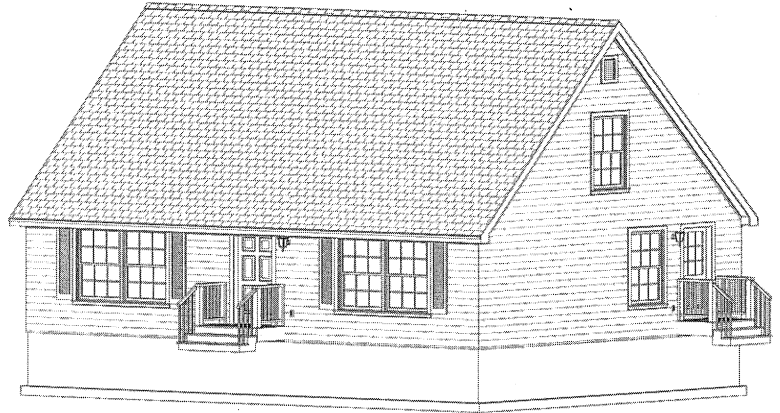


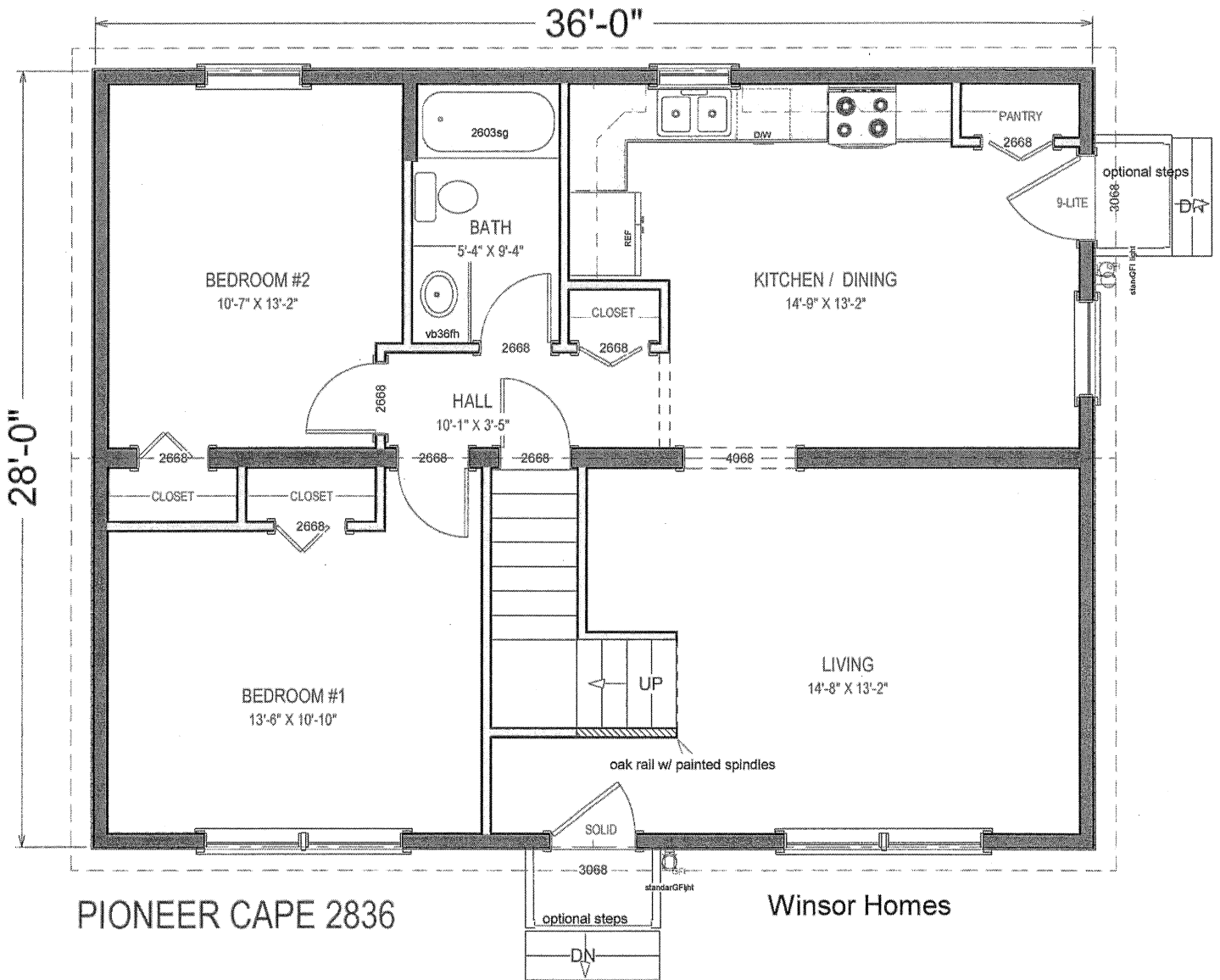
# WINSOR HOMES, LLC

“The Leader in Modular Homes”

## PIONEER CAPE 28'X36' EXPANDABLE SECOND FLOOR



For Pricing , See Reverse Side



## Winsor Homes, LLC

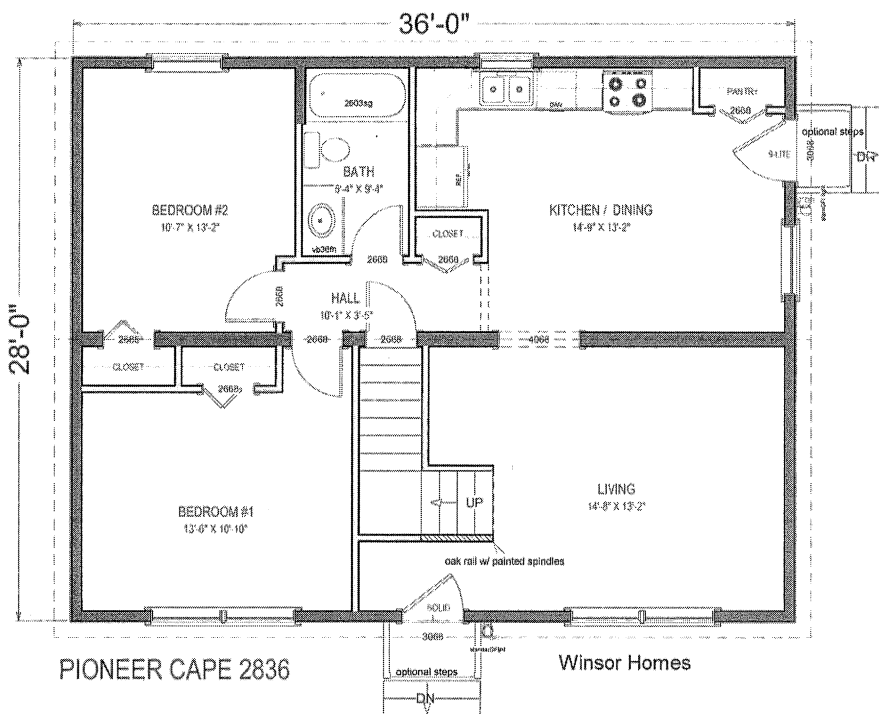
429 Daniel Webster Hwy., Meredith, NH 03253

(603) 279-6548

[www.winsorhomes.com](http://www.winsorhomes.com)

Email: [info@winsorhomes.com](mailto:info@winsorhomes.com)

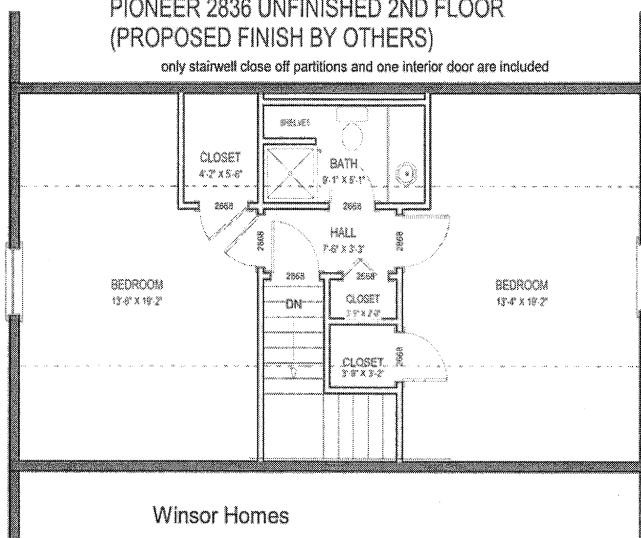
# WINSOR HOMES, LLC



## Pioneer 28'x36' Cape (Unfinished 2nd flr.)

PIONEER 2836 UNFINISHED 2ND FLOOR  
(PROPOSED FINISH BY OTHERS)

only stairwell close off partitions and one interior door are included



### \$ 109,300.00 Base Price for the Pioneer 28'X36' Two Box Cape (Unfinished 2nd Floor)- Base Price Includes:

- Delivery & Crane Costs
- Complete Interior and Exterior Trim Out Work
- 80lbs Snow Load for Roof Rafters with a 12/12 Roof Slope
- All Exterior Doors are 36" Wide
- Finished & Insulated Stairwell to Second Floor
- R-38 Insulation in First Floor Ceiling (Floor of Second Floor).
- Basement Stairs Built to Code
- Double Hung Windows
- Gable End Overhangs
- Vinyl Jambs on Front and Side Door
- Extended Interior Window Sills
- Interior on Site Carpet and Vinyl Connections (Includes Carpet on Stairs to Second Floor)
- Building Debris Removal for Building Waste Generated by Winsor Homes' Contractors
- Job Site Porta Potty (After Crane Day)

### Options:

- \$ 1,100.00 Supply and Install Sill Plates and Lally Columns
- \$ 7,600.00 Complete Heating System— FHW Oil, Steel Boiler, One Zone with Power Vent, Tankless Coil Hot Water and a 275 Gallon Oil Tank
- \$ 4,400.00 Standard Interior Plumbing Hookups - Includes Washer/Dryer Rough In in Basement
- \$ 3,200.00 Standard Interior Electrical Hookups - Includes Ext. Overhead Mast Kit & Well Tank Wiring
- \$ 1,600.00 Advantech Subfloor in Lieu of Standard

**\$ 127,200.00 Total Base Price Plus Options Listed Above**

Revised 04/02/19

## Winsor Homes, LLC

429 Daniel Webster Hwy., Meredith, NH 03253

(603) 279-6548

www.winsorhomes.com

Email: info@winsorhomes.com