

# WINSOR HOMES, LLC

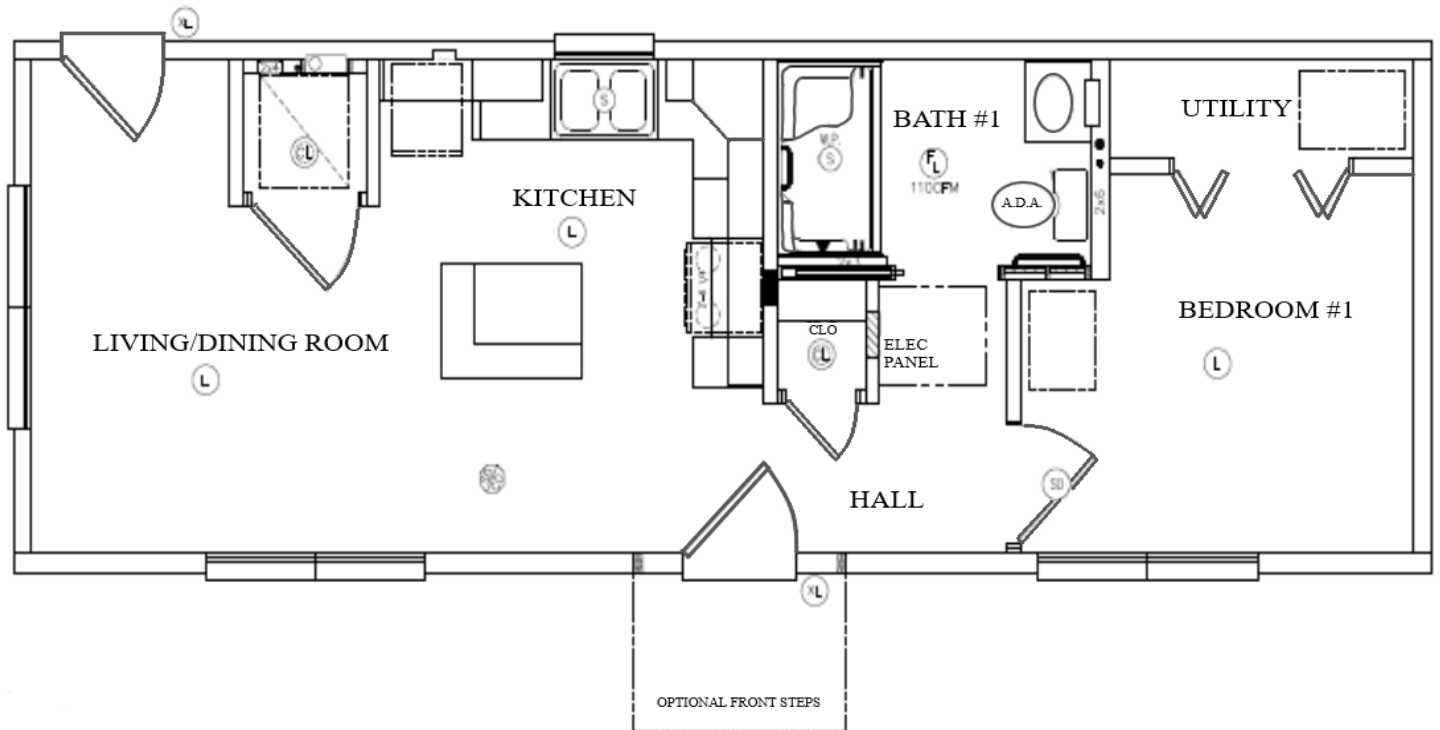
“The Leader in Modular Homes”

ADU— ACCESSORY DWELLING UNIT  
13'-6" X 40'

For Pricing , See Reverse Side



\*Steps, Decks and/or Porches are Optional

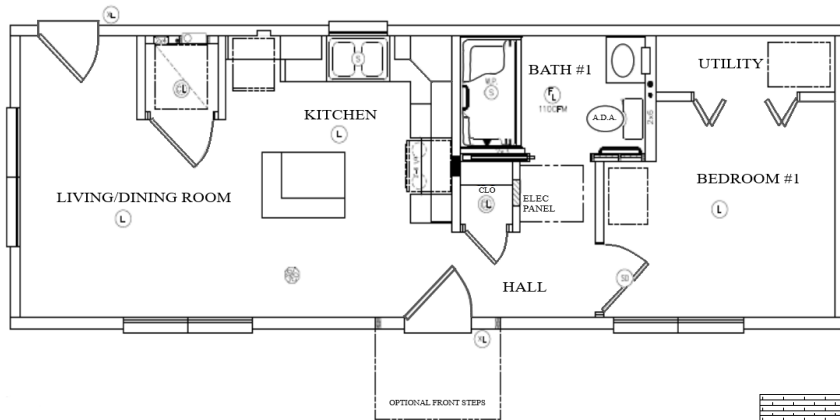


**Winsor Homes, LLC**

429 Daniel Webster Hwy., Meredith, NH 03253

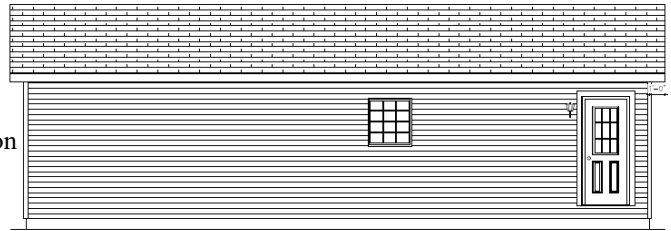
(603) 279-6548 [www.winsorhomes.com](http://www.winsorhomes.com) Email: [info@winsorhomes.com](mailto:info@winsorhomes.com)

# WINSOR HOMES, LLC



**ADU**  
**13'-6" x 40'**

Rear  
Elevation



## **\$ 105,100.00 Base Price ADU\***

Base Price Includes:

- Delivery & Crane Costs
- Complete Interior and Exterior Trim Out Work
- 80lbs Snow Load Modular Roof Trusses with a 7/12 Roof Slope
- R-57 Roof Insulation—Combination Fiberglass and Cellulose
- All Exterior Doors are 36" Wide—Vinyl Jambs on Front and Side Exterior Doors
- Harvey Slimline White Vinyl Double Hung Windows (with Grids)
- Gable End and Eave Roof Overhangs
- Extended Interior Window Sills
- Includes on Site Carpet and Vinyl Connections for Standard Flooring
- Building Debris Removal for Waste Generated by Winsor Homes' Contractors
- Advanced Air Sealing (ERV System May Be Required By Your Town to Meet Code—This Will Be An Extra Charge If Needed.)
- Job Site Portable Restroom (Delivered to Site Before Crane Day)

\*Steps, Decks and/or Porches are Optional

## **Options to Finish Home:**

\$ 1,300.00 Supply and Install Sill Plates

INCLUDED Electrical Baseboard Heating System

\$ 2,850.00 50 Gallon Electric Water Heater

\$ 5,000.00 Standard Interior Plumbing Hookups

\$ 4,500.00 Standard Interior Electrical Hookups - Includes Exterior Overhead Mast Kit & Well Tank Wiring

\$ 175.00 Install Plumbing for Homeowner Supplied Icemaker in Kitchen Refrigerator

**\$118,925.00 Total Base Price With Options Listed Above\***

Revised 07/18/24 \*Prices are subject to change without notice

**Winsor Homes, LLC**

**429 Daniel Webster Hwy., Meredith, NH 03253**

**(603) 279-6548 www.winsorhomes.com Email: info@winsorhomes.com**