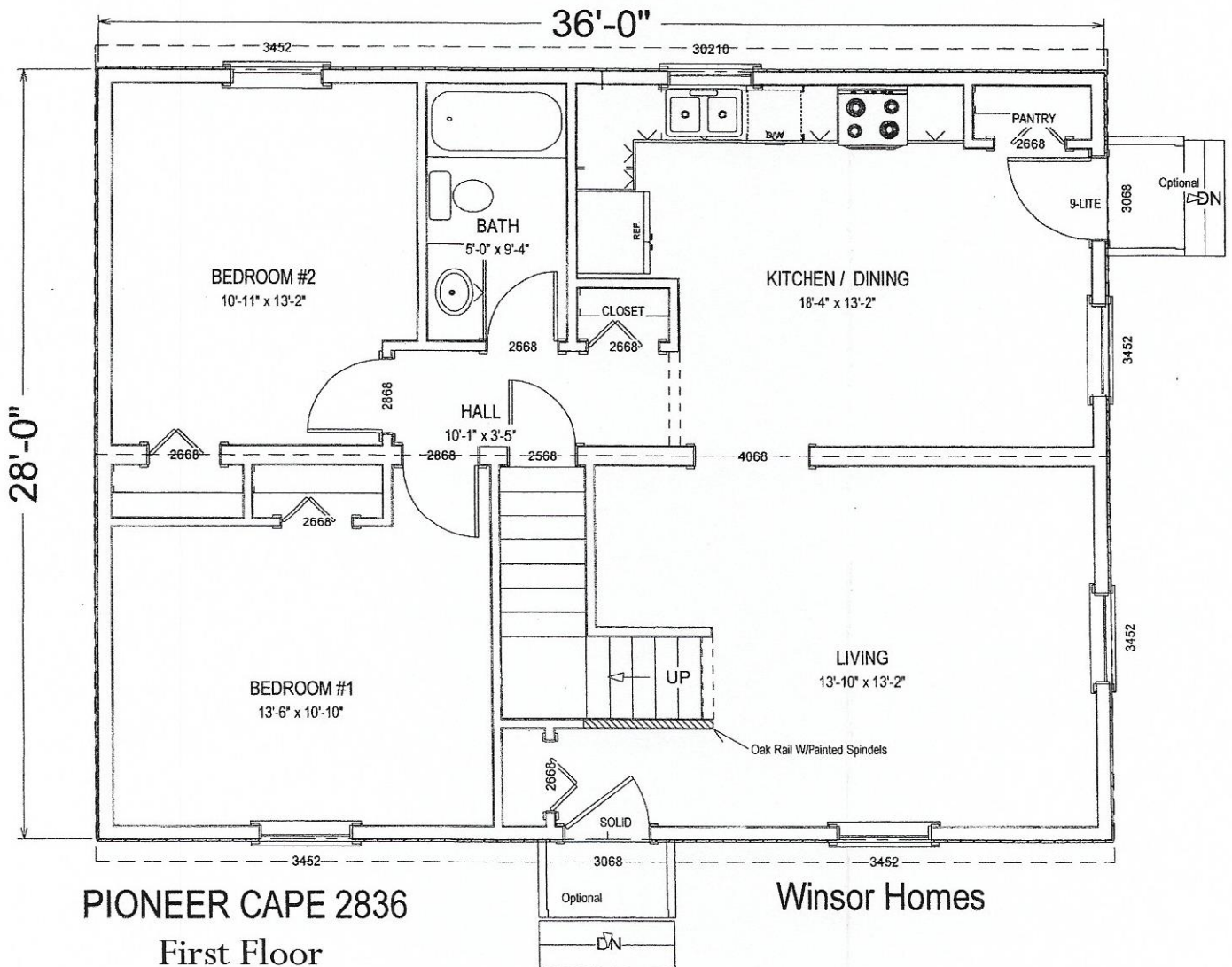
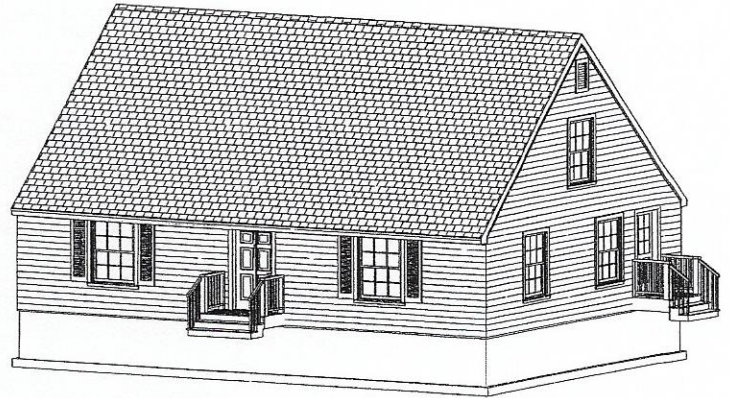


WINSOR HOMES, LLC

“The Leader in Modular Homes”

PIONEER CAPE 28'X36' - EXPANDABLE SECOND FLOOR

For Pricing , See Reverse Side

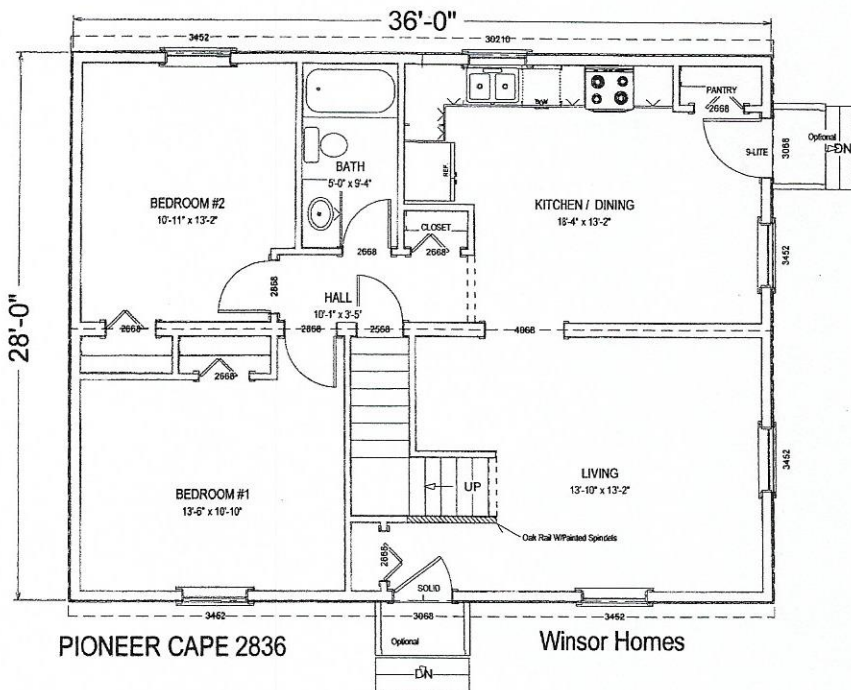


Winsor Homes, LLC

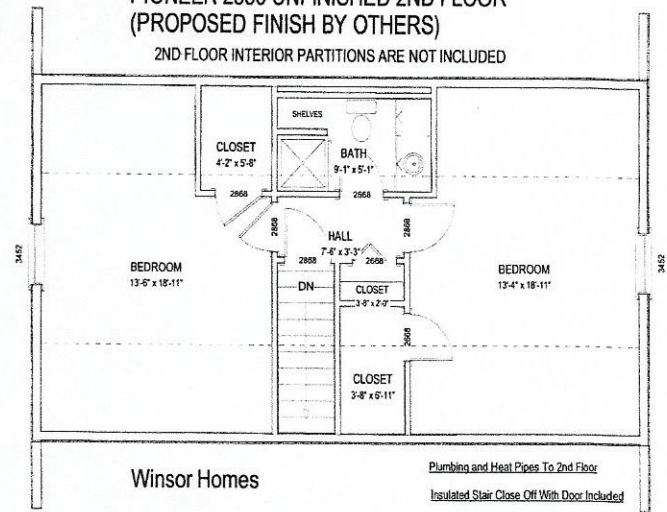
429 Daniel Webster Hwy., Meredith, NH 03253 (603) 279-6548 Fax (603) 279-5910

WINSOR HOMES, LLC

Pioneer 28'x36' Cape (Unfinished 2nd fl.)



PIONEER 2836 UNFINISHED 2ND FLOOR
(PROPOSED FINISH BY OTHERS)
2ND FLOOR INTERIOR PARTITIONS ARE NOT INCLUDED



\$ 89,450.00 Base Price for the Pioneer 28'X36' Two Box Cape (Unfinished 2nd Floor)- Base Price Includes:

- Delivery & Crane Costs
- Complete Interior and Exterior Trim Out Work
- 80lbs Snow Load for Roof Rafters with a 12/12 Roof Slope
- All Exterior Doors are 36" Wide
- Finished & Insulated Stairwell to Second Floor
- R-30 Insulation in First Floor Ceiling (Floor of Second Floor). May need to Increase Insulation On Site as per Energy Code. This will be Extra.
- Basement Stairs Built to Code
- Interior on Site Carpet and Vinyl Connections (Includes Carpet on Stairs to Second Floor)
- Building Debris Removal for Building Waste Generated by Winsor Homes' Contractors
- Job Site Porta Potty (After Crane Day)

Options:

- \$ 1,100 Supply and Install Sill Plates and Lally Columns
- \$ 1,750 Two Sets of Pressure Treated Exterior Platform Steps (for 3068 Door)
- \$ 5,600 Complete Heating System— FHW Oil, Steel Boiler, One Zone with Power Vent, Tankless Coil Hot Water and a 275 Gallon Oil Tank
- \$ 3,400 Standard Interior Plumbing Hookups - Includes Washer/Dryer Rough In in Basement
- \$ 2,600 Standard Interior Electrical Hookups - Includes Ext. Overhead Mast Kit & Well Tank Wiring
- \$ 1,100 Insulate Basement Ceiling with R-30 Insulation
- \$ 350 Double Hung Windows
- \$ 350 Gable End Overhangs

\$ 105,700.00 Total Base Price Plus Options Listed Above

Revised 7/27/16

Winsor Homes, LLC
429 Daniel Webster Hwy., Meredith, NH 03253
(603) 279-6548 Fax (603) 279-5910