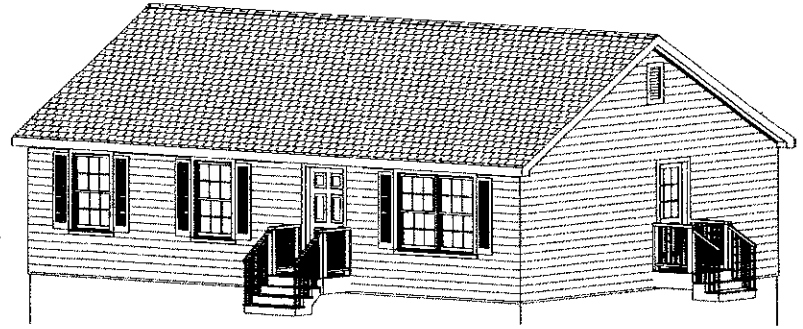


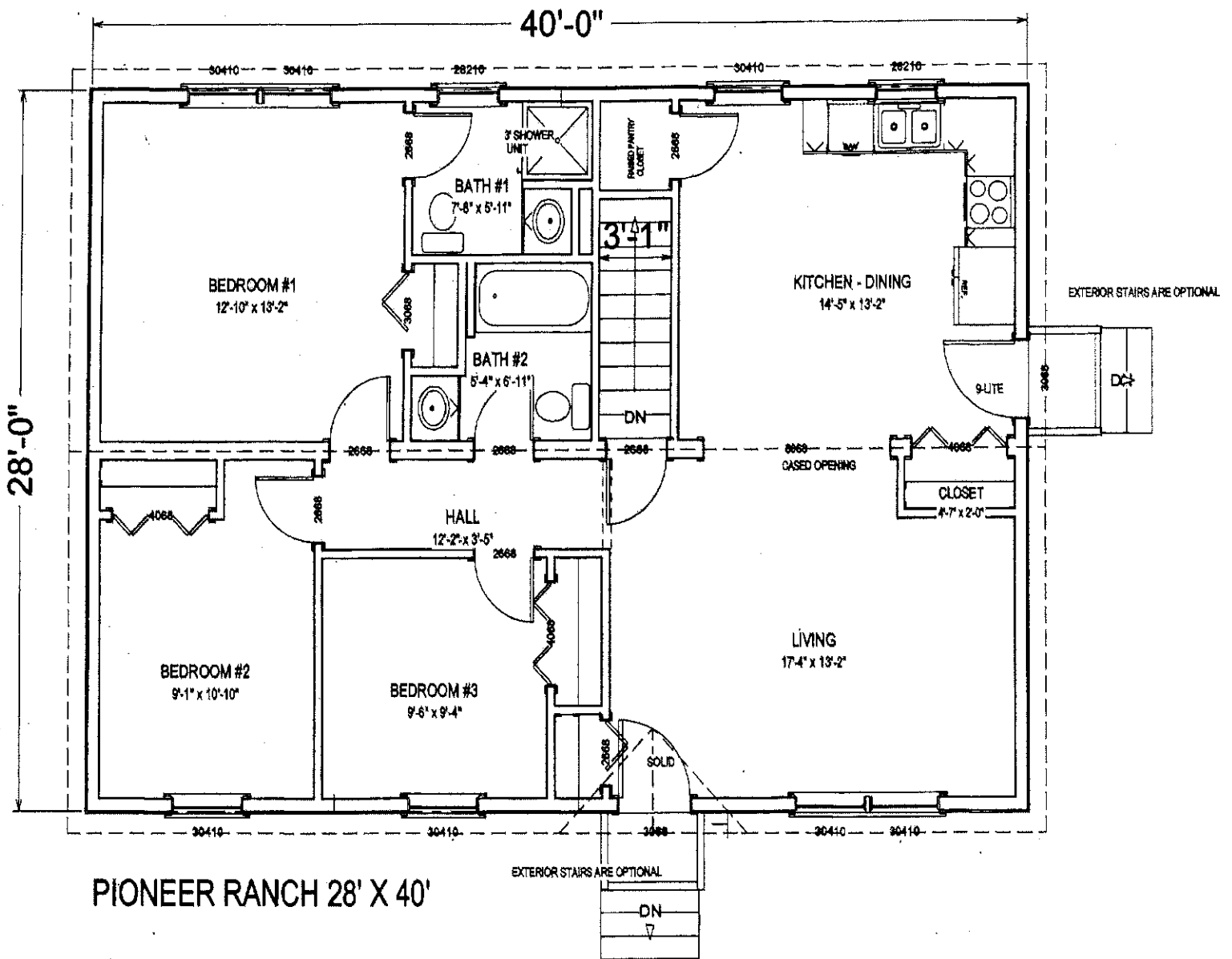
# WINSOR HOMES, LLC

“The Leader in Modular Homes”

## PIONEER RANCH 28'X40'



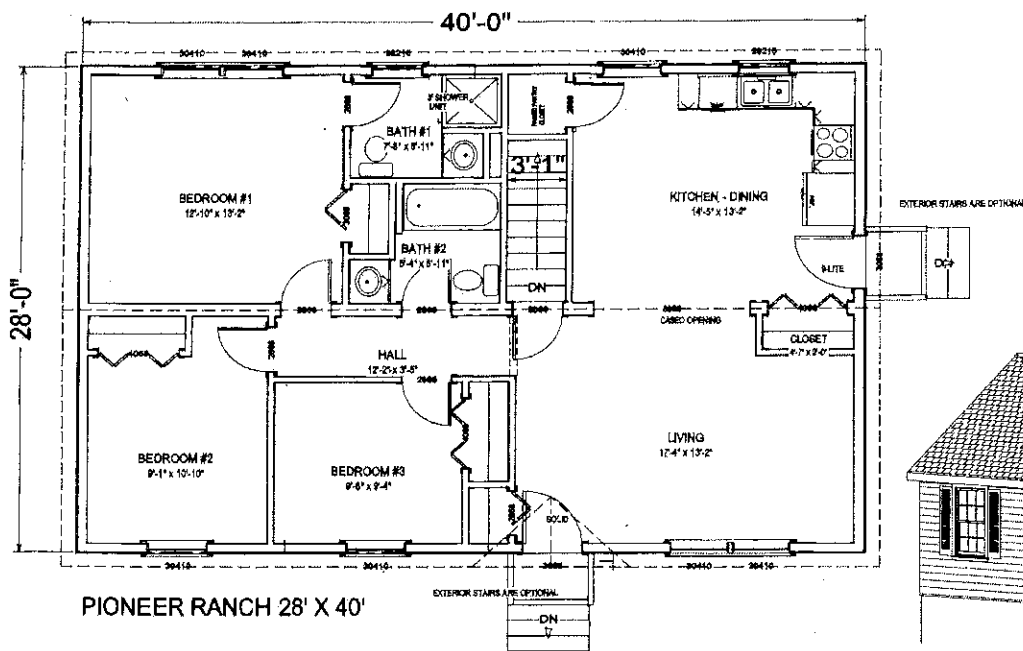
For Pricing, See Reverse Side



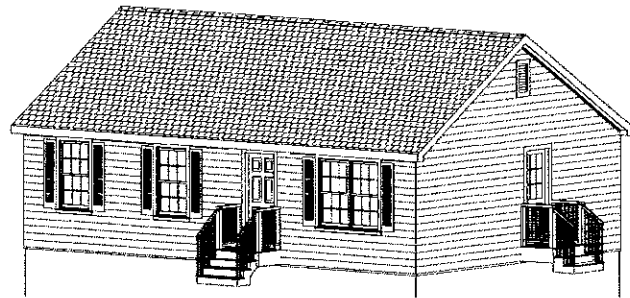
Winsor Homes, LLC

429 Daniel Webster Hwy., Meredith, NH 03253 (603) 279-6548 [winsorhomes@metrocast.net](mailto:winsorhomes@metrocast.net)

# WINSOR HOMES, LLC



## Pioneer 28'x40' Ranch



### \$ 98,950.00 Base Price for the Pioneer 28'X40' Ranch—

Base Price Includes:

- Delivery & Crane Costs
- Complete Interior and Exterior Trim Out Work
- 80lbs Snow Load for Roof Rafters with a 6/12 Roof Slope
- All Exterior Doors are 36" Wide
- Includes Interior on Site Carpet and Vinyl Connections
- Building Debris Removal for Waste Generated by Winsor Homes' Contractors
- Job Site Porta Potty (After Crane Day)
- Basement Stairs Built to Code

### Options:

- \$ 1,100 Supply and Install Sill Plates and Lally Columns
  - \$ 2,000 Two Sets of P.T. Exterior Platform Steps (for 3068 Door) with Avg. Height Steps
  - \$ 5,900 Complete Heating System— FHW Oil, Steel Boiler, One Zone with Power Vent, Tankless Coil Hot Water and a 275 Gallon Oil Tank
  - \$ 3,400 Standard Interior Plumbing Hookups - Includes Washer/Dryer Rough In in Basement
  - \$ 2,500 Standard Interior Electrical Hookups - Includes Ext. Overhead Mast Kit & Well Tank Wiring
  - \$ 1,450 Insulate Basement Ceiling with R-30 Insulation
  - \$ 350 Double Hung Windows
  - \$ 530 Gable End Overhangs
  - \$ 520 Advantech Subfloor in Lieu of Standard
  - \$ 170 Vinyl Jambs on Front and Side Door
  - \$ 196 Extended Interior Window Sills in Lieu of Standard
  - \$ 290 Raised Bottom Closet
- \$ 117,356.00 Total Base Price Plus Options Listed Above**

Revised 12/8/17

Winsor Homes, LLC 429 Daniel Webster Hwy., Meredith, NH 03253  
(603) 279-6548 [www.winsorhomes.com](http://www.winsorhomes.com) Email: [winsorhomes@metrocast.net](mailto:winsorhomes@metrocast.net)